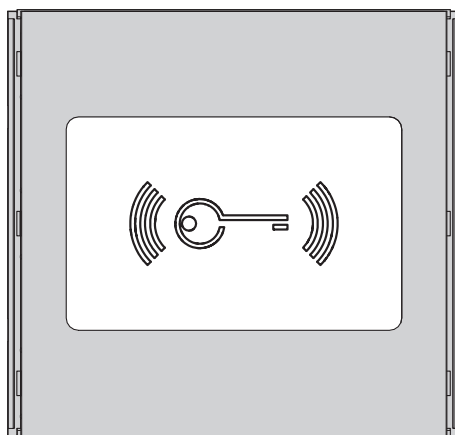




RFID module for access control

FB00880-EN



MTMR RFID

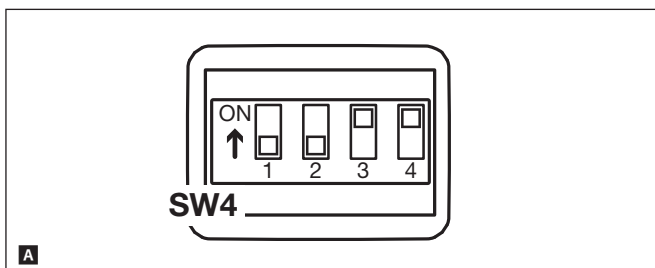
PROGRAMMING MANUAL

General precautions

⚠ IMPORTANT! Important safety instructions: READ CAREFULLY!

- Installation, programming, commissioning and maintenance must only be carried out by expert qualified technicians in full compliance with the regulations in force.
- Wear anti-static shoes and clothing if working on the electronic circuit board.
- Keep this precaution information.
- Disconnect the power supply during any cleaning or maintenance work.
- The product must only be used for the purpose for which it was expressly designed. Any other use is to be considered dangerous.
- The manufacturer declines all liability for any damage as a result of improper, incorrect or unreasonable use.

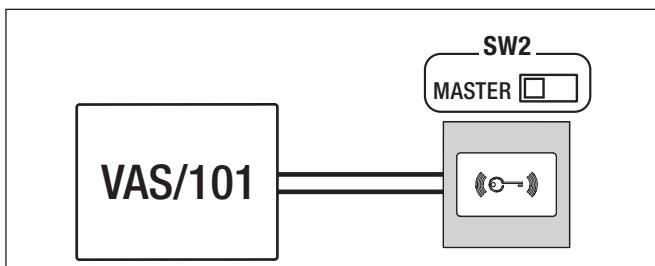
RESTORE FACTORY DEFAULT



To restore module MTMRFID to factory settings it is necessary to disconnect the power supply, position DIP1 and DIP2 of SWITCH SW4 to ON and power the module again **A**.

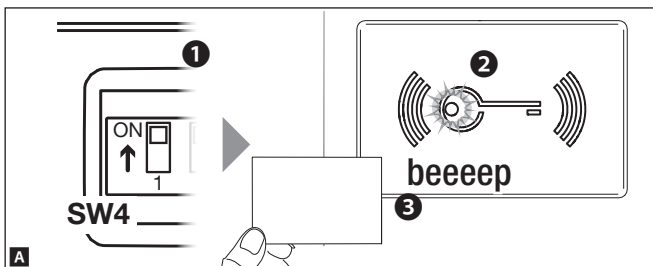
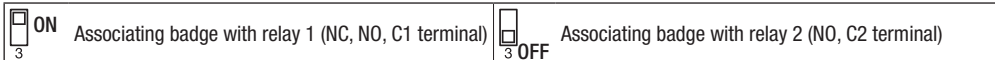
After 5 seconds the module restarts and a sound confirms the factory settings have been restored.

PROGRAMMING STAND-ALONE IN MASTER MODE



Associating badges **A**

This procedure lets you associate a badge with one of the two relays present on the MTMRFID module:



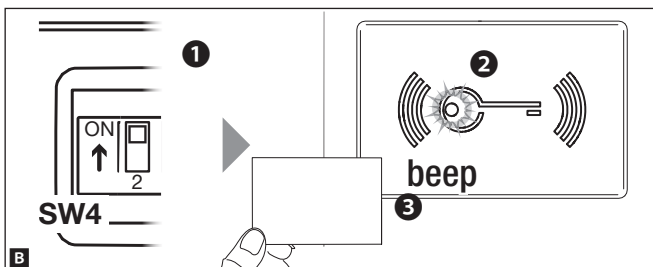
To associate badges with the selected relay, position DIP1 to **ON** ❶. When the red LED on module MTMRFID starts to flash slowly ❷ swipe the badges to be associated on the reader ❸.

A long beep will confirm the procedure was correct.

❶ In the event of an error, this will be indicated by 3 fast beeps. Repeat the stage correctly.

When programming is completed, reposition DIP1 to **OFF**: the red LED goes out.

Removing badges **B**



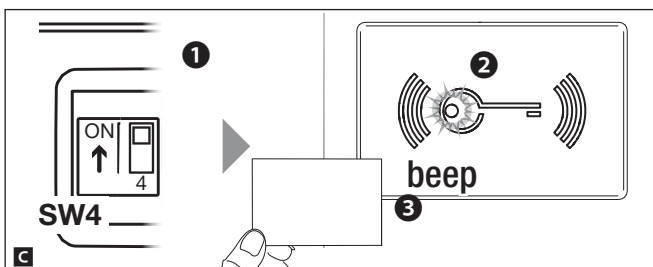
To remove badges from the associated relay, position DIP2 to **ON** ❶. When the red LED on module MTMRFID starts to flash quickly ❷ swipe all the badges to be removed on the reader.

A long beep will confirm the procedure was correct ❸.

❶ In the event of an error, this will be indicated by 3 fast beeps. Repeat the stage correctly.

When programming is completed, reposition DIP2 to **OFF**: the red LED goes out.

Removing lost badges **C**



To remove lost badges, position DIP4 to **ON** ❶. When the red LED on module MTMRFID stays constantly on ❷, swipe all the badges previously acquired on the reader.

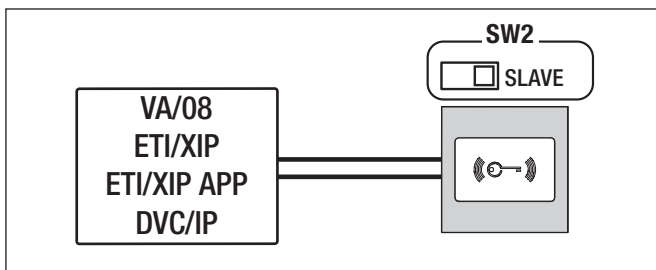
A beep will confirm removal of the badges previously programmed but not acquired in this stage ❸.

❶ In the event of an error, this will be indicated by 3 fast beeps. Repeat the stage correctly.

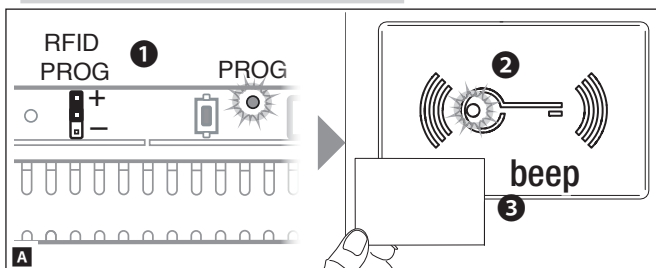
When programming is completed, reposition DIP4 to **OFF**: the red LED goes out.

❶ For the procedure to be valid at least one previously acquired badge must be swiped.

PROGRAMMING STAND-ALONE IN SLAVE MODE



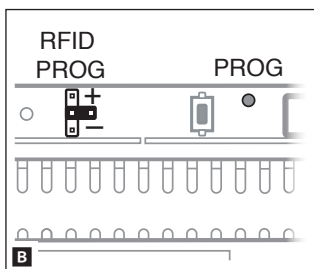
Associating badges with VA/08 **A**



To associate badges, put the RFID PROG jumper of the power supply in the "+" position **1**.

When the red LED on module MTMRFD starts to flash quickly **2**, swipe the badges to be associated on the reader **3**.

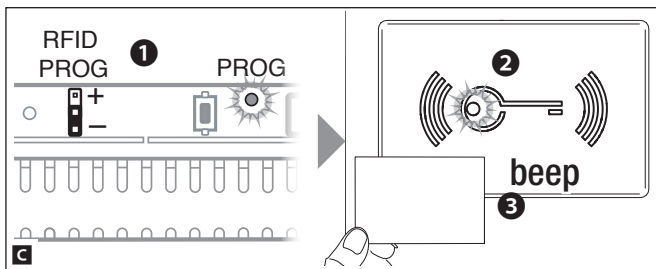
A beep will confirm the association has taken place.



i In the event of an error, this will be indicated by 3 fast beeps. Repeat the stage correctly.

When programming is completed reposition the RFID PROG jumper as shown in figure: the PROG LED on the power supply and the red LED on the reader go out **B**.

Removing badges with VA/08 **C**

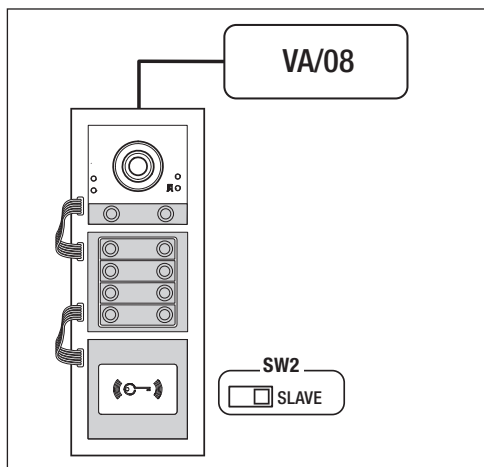
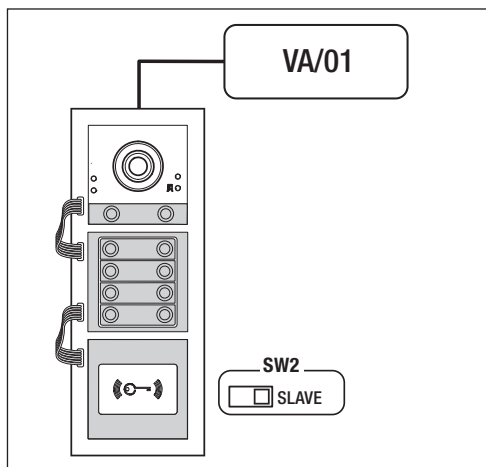


To remove badges, put the RFID PROG jumper of the power supply in the "+" position **1**. When the red LED on module MTMRFD starts to flash slowly **2**, swipe the badges to be removed on the reader twice.

A beep will confirm the procedure was correct **3**.

i In the event of an error, this will be indicated by 3 fast beeps. Repeat the stage correctly.

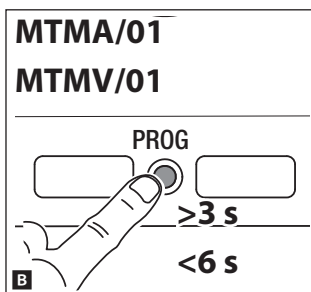
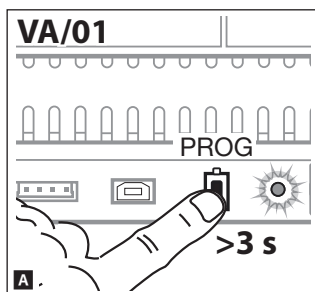
When programming is completed reposition the RFID PROG jumper as shown in figure: the PROG LED on the power supply and the red LED on the reader go out **B**.



Programming relay codes with badges (only with audio module MTMA/01 and video module MTMV/01)

i For operating details refer also to the manual for audio module MTMA/01 and video module MTMV/01. Programming relay codes lets you manage the relays present on audio module MTMA/01, video module MTMV/01, or any eventual VLS/2, via badges.

Going into Programming

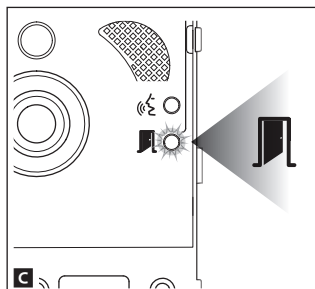


With VA/01

Press the PROG button until the PROG LED lights up **A**.

With MTMA/01-MTMV/01 without VA/01

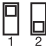
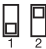
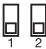
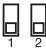
Press the PROG key on the entry panel for at least 3 seconds and release it within 6 seconds **B**.



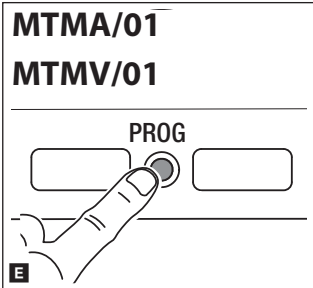
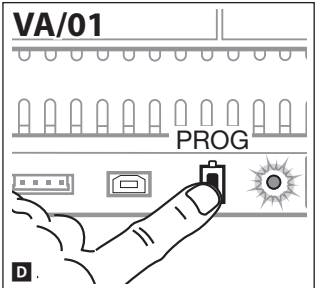
The LED  will flash to signal entry into programming **C**.

To associate badges with relays on audio module MTMA/01, video module MTMV/01, or any eventual VLS/2, follow the sequence in the table. Programming is necessary on each entry panel whose relays you want to control.
With each association a beep will confirm the procedure is correct.

i In the event of an error, this will be indicated by 3 fast beeps. Repeat the stage correctly.


Sequence	Command
 + swipe badge on module MTMRFID on the entry panel to be programmed	Relay 1 on module VLS/2
 + swipe badge on module MTMRFID on the entry panel to be programmed	Relay 2 on module VLS/2
 + swipe badge on module MTMRFID on the entry panel to be programmed	Auxiliary contact of module MTMA/01 MTMV/01
 + swipe badge on module MTMRFID on the entry panel to be programmed	Door-release control of module MTMA/01 MTMV/01

Exiting Programming



With VA/01
Briefly press the PROG key **D**.

With MTMA/01-MTMV/01 without VA/01
Briefly press the PROG key on the entry panel **E**.

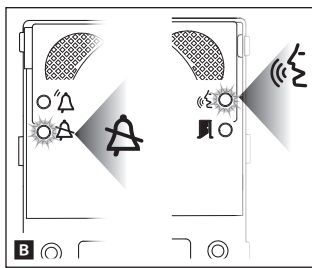
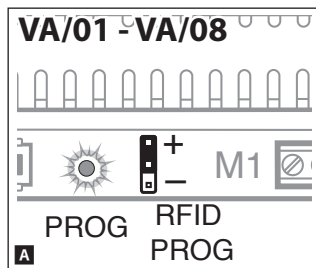
The  LED on the entry panel and the PROG LED on the power supply go out.

PROGRAMMING ACCESS CONTROL WITH BADGES

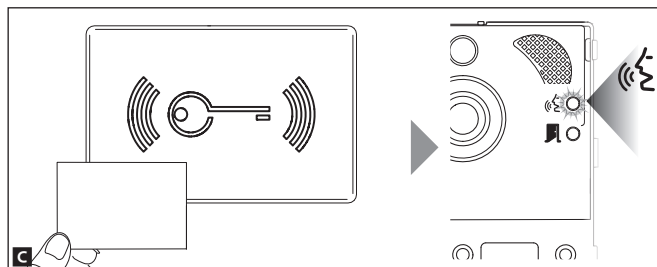
This procedure lets you associate badges with each group of users, identified by a single call, or remove them, to control the door release in audio module MTMA/01, MTMA/08 and video module MTMV/01, MTMV/08.

A maximum of 5 badges can be associated per group.

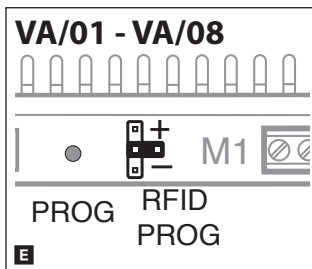
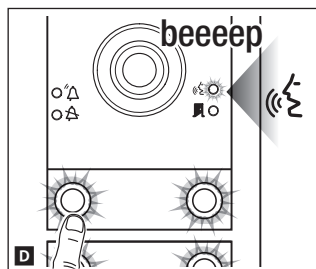
Associating badges



To associate badges, put the RFID PROG jumper of the power supply in the “+” position. The PROG LED on the power supply and LEDs and will flash quickly **A B**.



Swipe the badge to be programmed. If the badge is valid, the LED on the entry panel stays constantly on and it is possible to continue with programming **C**.

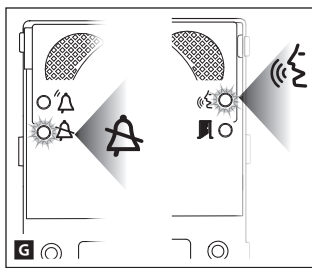
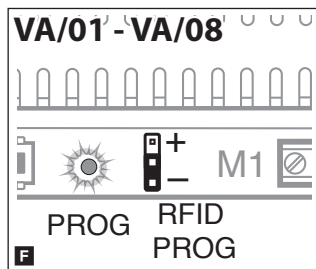


Press the call key of the group the badge is to be associated with. A long beep will confirm the procedure was correct **D**.

(i) In the event of an error, this will be indicated by 3 fast beeps. Repeat the stage correctly.

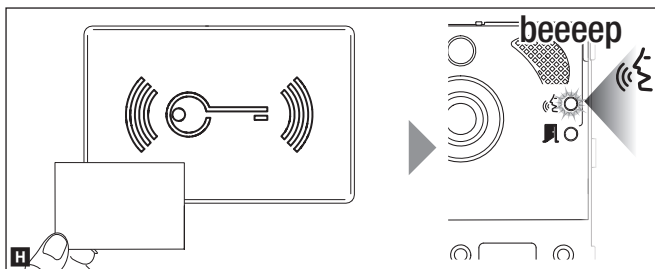
When programming is completed, position the RFID PROG jumper as shown in figure **E**.


Removing badges





To remove badges, put the power supply's RFID PROG jumper in the “-” position.

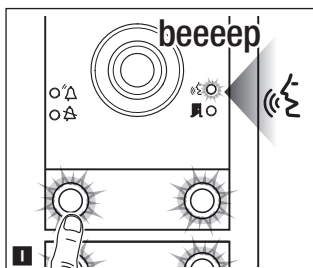
The PROG LED on the power supply and LEDs and will flash slowly **F G**.



Approach the badge relating to a group to the reader and swipe it.
If the badge is valid the  LED on the entry panel will stay constantly on.
Swipe the badge again to confirm the operation.

A long beep will confirm the procedure was correct .


 In each of the two stages of deletion any error condition will be signalled by three fast beeps. Repeat the stage correctly.



To delete all the badges relating to a group, press the call key relating to the group whose badges you want to delete.

If the code is valid, the LED  stays constantly on and it is possible to cancel.

Press the call key relating to the group again.

A long beep will confirm the procedure was correct .

 In each of the two stages of deletion any error condition will be signalled by three fast beeps. Repeat the stage correctly.

When programming is completed, position the RFID PROG jumper as shown in figure .

This product complies with the relevant directives in force.

Decommissioning and disposal. Dispose of the packaging and the device at the end of its life cycle responsibly, in compliance with the laws in force in the country where the product is used. The recyclable components are marked with a symbol and the material's ID marker.

THE DATA AND INFORMATION SHOWN IN THIS MANUAL ARE TO BE CONSIDERED AS SUBJECT TO CHANGE AT ANY TIME AND WITHOUT THE NEED FOR ANY ADVANCE WARNING.

MEASUREMENTS, UNLESS OTHERWISE INDICATED, ARE IN MILLIMETRES.

CAME 
BPT

CAME.COM

CAME S.P.A.

Via Martiri Della Libertà, 15

31030 Dosson di Casier - Treviso - Italy

tel. (+39) 0422 4940 - fax. (+39) 0422 4941